

# Cardinal LOAD CELLS

SERIES LFB - BEAM TYPE - FOR LIGHT TO MEDIUM WEIGHING



- Capacities from 125 kg to 1250 kg
- Highly resistant to eccentric loads
- Waterproof construction
- Stainless steel for corrosion resistance
- Direct mounting to weighing platform
- 3 mechanical loading options
- 2 year warranty

Cardinal's 125 kg to 1250 kg capacity beam type load cells have a low profile design, and are made specifically for light to medium weighing applications such as floor scales. Their design makes them highly resistant to eccentric loads. Stainless steel construction offers strength and the ultimate in protection when caustic or corrosive environments are encountered.

These cells are potted with a proprietary sealant that offers superior waterproofing, while remaining flexible over the life of the load cell. This special compound protects the load cell strain gages, and over a broad temperature range.

## SPECIFICATIONS

### Mechanical Data

Rated Capacity, (R.C.) $E_{max}$  .. 125, 250, 500 & 1250 kg  
 Minimum Dead Load ..... 0 kg  
 Safe Load Limit ..... 150% R.C.  
 Ultimate Load ..... 300% R.C.  
 Deflection at R.C. .... 0.25 to 0.38 mm  
 Spring Element Material ..... 17-4 PH  
 Net Weight ..... 0.5 kg

### Certificate Data

Issuing Body ..... OIML  
 Certificate Number ..... R60/1991-DK-00.02  
 Accuracy Class ..... C3  
 Maximum Number of Load  
 Cell Intervals,  $n_{max}$  ..... 3000  
 Humidity Symbol ..... CH  
 Minimum Load Cell  
 Verification Interval  $V_{min}$  ..... 0.023, 0.046, 0.09 & 0.23 kg

### Electrical Data

Rated Output ..... 2mV/V  
 Excitation Voltage,  
 Recommended ..... 10 VDC  
 Excitation Voltage,  
 Maximum ..... 15 VDC  
 Terminal Resistance  
 Excitation ..... 395 ± 20 ohms  
 Signal ..... 350 ± 5 ohms  
 Zero Load Output ..... ± 1% R.C.  
 Insulation Resistance ..... >5000 megohms at  
 50 VDC

### Environmental Data

Temperature Compensation  
 Range ..... -10° to +40°C  
 Operating Temperature Range ..... -20° to +60°C  
 Construction & Protection  
 Code ..... CP-55 HU  
 Barometric Pressure Effect  
 on Zero Load Output ..... <1 v (min)/1kPa

### Color Code

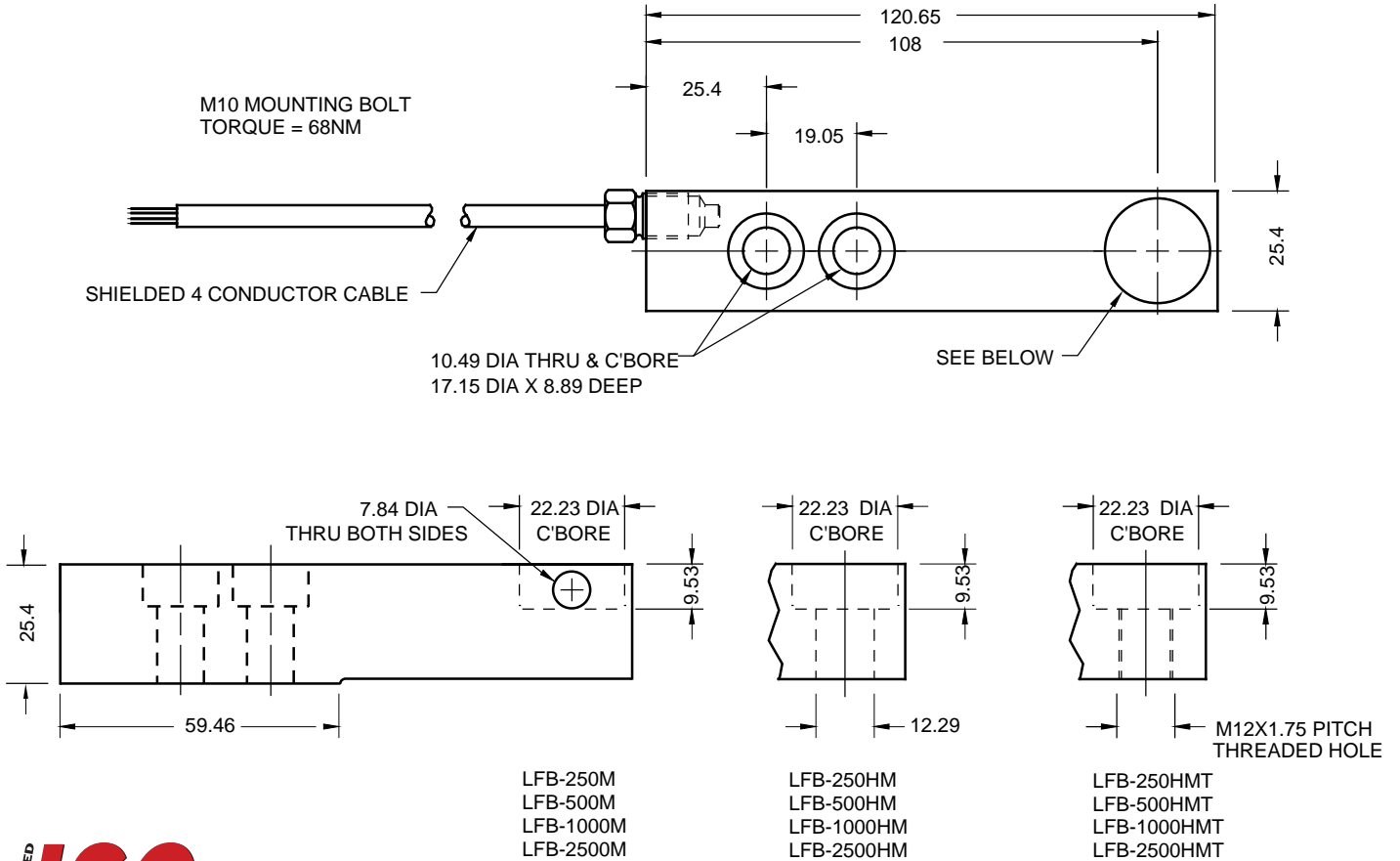
+ Excitation ..... Green | - Signal ..... White  
 - Excitation ..... Black | + Signal ..... Red

# Cardinal BEAM TYPE LOAD CELLS

- Model LFB-250M- 125 kg capacity - cable length = 67"
- Model LFB-500M - 250 kg capacity - cable length = 120"
- Model LFB-1000M - 500 kg capacity - cable length = 120"
- Model LFB-2500M - 1250 kg capacity - cable length = 120"

All models are of stainless steel construction.

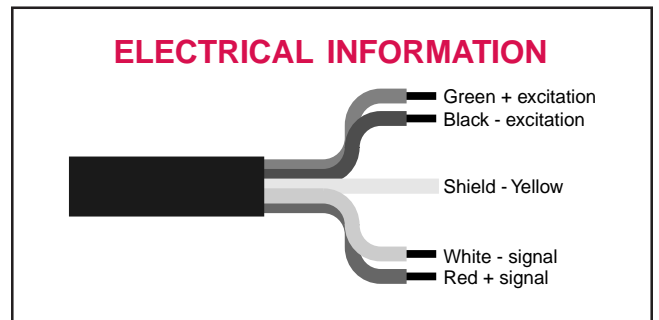
All dimensions are in mm unless otherwise noted.



This load cell meets the requirements of OIML R60 and has been issued OIML certificate no. R60/1991-DK-00.02.



Cardinal Scale reserves the right to improve, enhance and modify features and specifications without prior notice.



203 East Daugherty  
P.O. Box 151  
Webb City, Mo 64870

Phone: 417•673•4631  
Fax: 417•673•5001  
www.cardinalscales.com